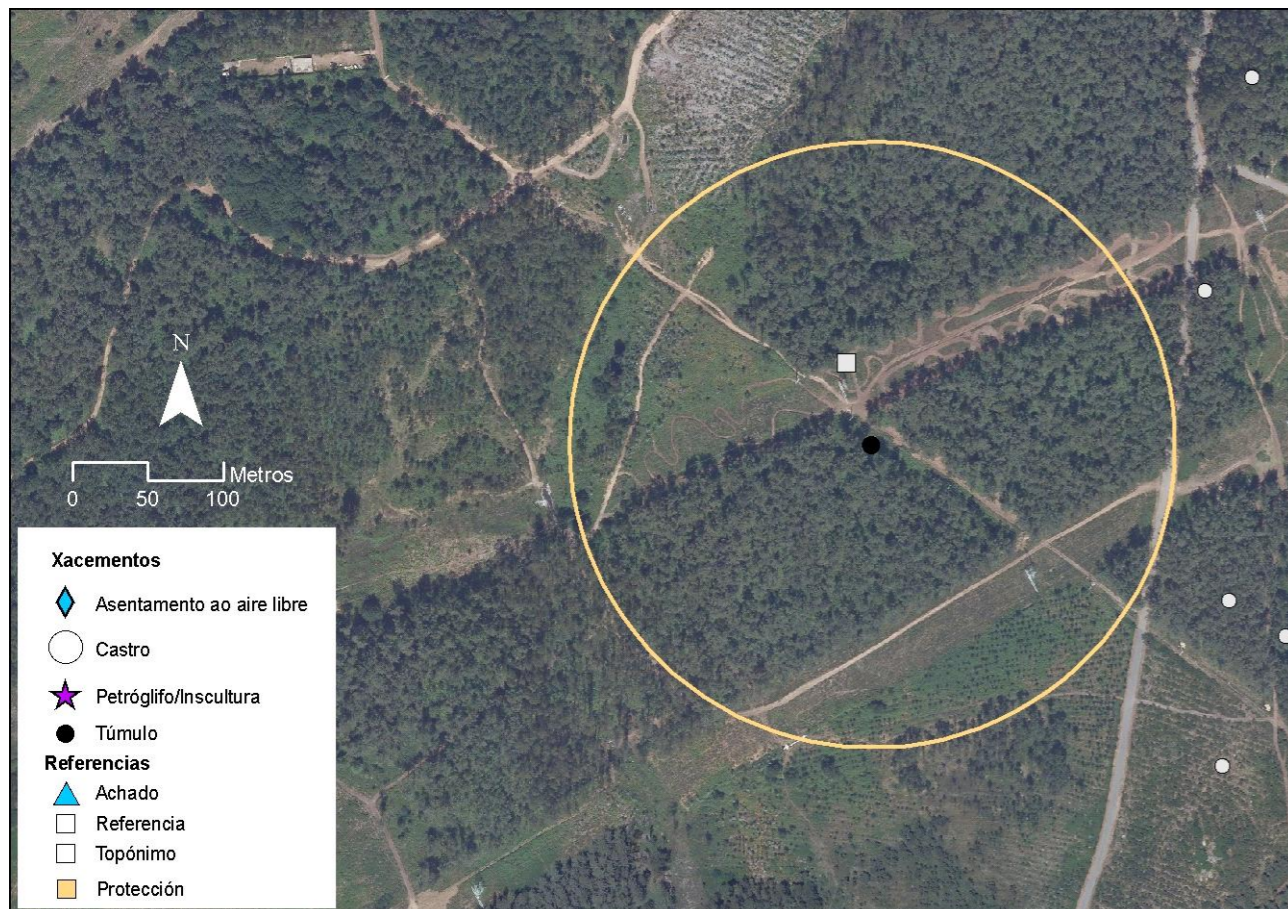


# ARCHAEOLOGICAL AREA OF MONTE PENIDE - REDONDELA - PONTEVEDRA



PNOA released by © Instituto Geográfico Nacional de España

<b>IDENTIFICATION DATA</b>		CODE:	GA36045055
NAME:	Mámoa of Chan da Cruz 26		
UTM29 ETRS89:	529702	529702	WGS84: -8.639892842 42.259947344



<b>TYPE OF ELEMENT</b>	TYPE:	Tumulus
------------------------	-------	---------

<b>DESCRIPTION AND CONSERVATION STATUS</b>	CONSERVATION:	No consta
--	---------------	-----------

Measurements of mound: 20.50m (N-S); 19.90m (E-W); 1.90m in height (S side). All measurements are approximations as due to vegetation, and other reasons, it was impossible to accurately define the extent of the site.

The general aspect and location of this mound indicates that it could correspond to Hidalgo-Costas tumulus no. 36, although the vegetation, the firebreak that goes to the north, and a fence that crosses the mound on the south side, alters the general structure of the site so that it is difficult to confirm this.

There is also a central depression that is impossible to define due to the reasons listed above.

