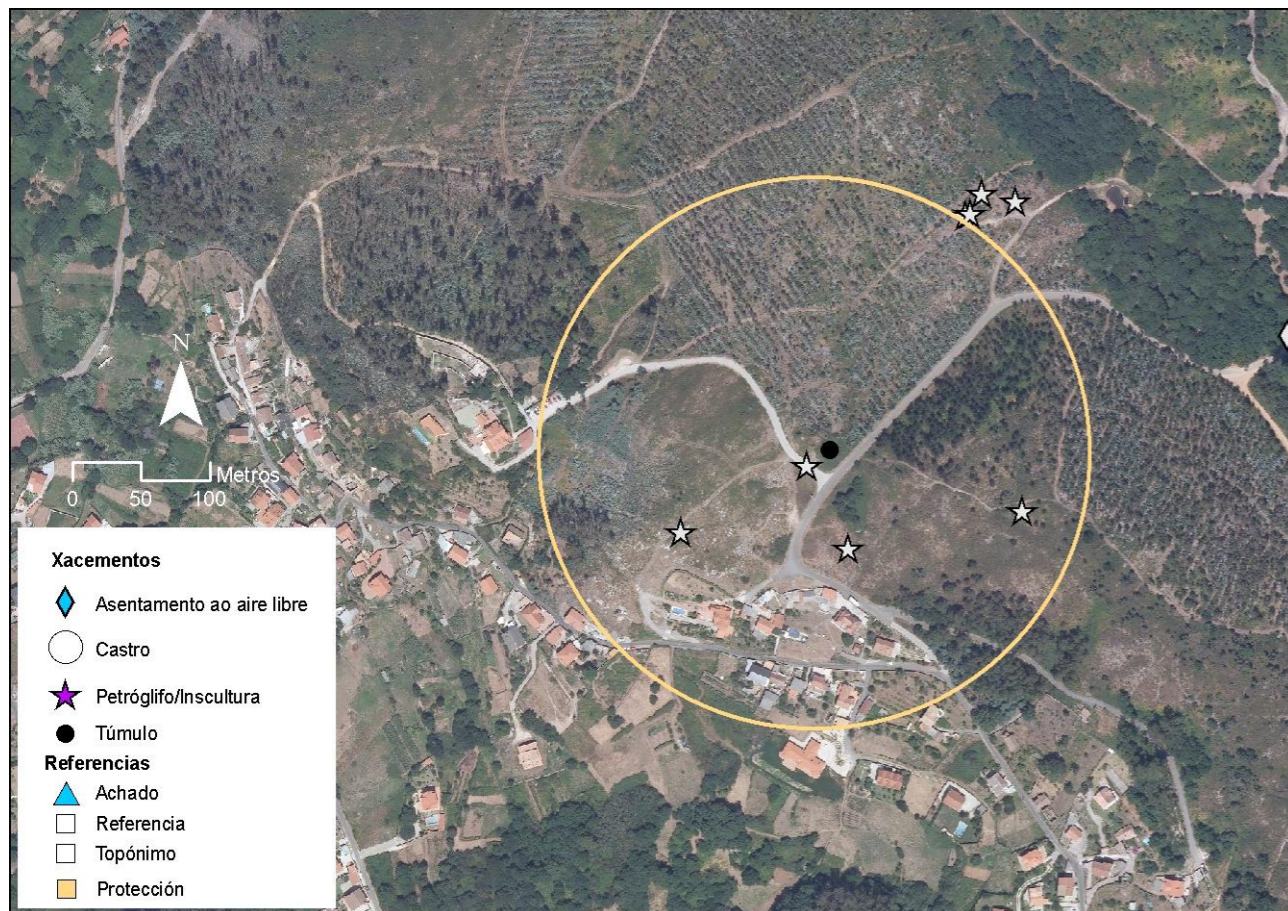


ARCHAEOLOGICAL AREA OF MONTE PENIDE - REDONDELA - PONTEVEDRA



PNOA released by © Instituto Geográfico Nacional de España



IDENTIFICATION DATA			CODE:	GA36045021
NAME:	Mámoa of Chan do Rato 1			
UTM29 ETRS89:	528987	528987	WGS84:	-8.648485611 42.272375225



TYPE OF ELEMENT	TYPE:	Tumulus
------------------------	-------	---------

DESCRIPTION AND CONSERVATION STATUS	CONSERVATION:	Mala
<p>Measurements of mound: 14.50m (N-S); 14m (E-W); 1.30m high (E side, zone of natural fall of land). Granite stones are visible on top (the remains of a possible mantle), as well as rubble (bricks). The central hole is impossible to measure because of the vegetation.</p> <p>The immediate vicinity is fairly disturbed, with quarrying holes.</p>		

